

Exterior fire rated coating solutions

Applications

- Timber Framing
- Timber Cladding
- Structural deck and pergola timber
- Underfloor applications
- Roof space ember attack applications
- Fences
- Utility poles
- Asset protection and risk reduction solutions
- PU Foam, fibreglass, carbon fibre and plastics
- Any timber application where bushfire resistant timber is required

Features

- Tested to AS3959 for a variety of timbers
- Suitable up to BAL29 requirements
- Self Priming
- Highly flexible and durable surface
- Low VOC water based system
- Exterior intumescent coating technology
- Simple application process
- Utilised across Australia on a variety of projects
- Meets the accelerated weathering requirements of AS3959



Bushfire compliant



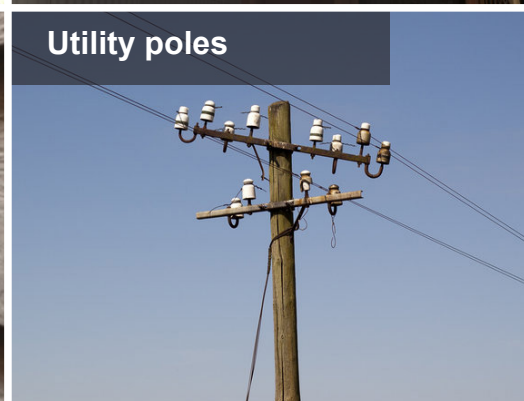
Heritage solutions



Risk reduction



Asset protection



Utility poles



Custom solutions



FIRESHELL F1E

coating for compliance

Utilising pine cedar and other soft woods to comply in bushfire zones has been a difficult task – until now.

Australian-based company EXFIRE has recently released FIRESHELL F1E, the first one-part exterior grade fire rated coating system for timber. The new technology allows builders and home owners to utilise traditional building materials in bushfire zones, simplifying construction and reducing costs.

FIRESHELL F1E complies with both the accelerated weathering and fire testing requirements of AS3959, the Australian Standard for building in a bushfire-prone area. The system has been developed and certified to re-classify softwoods and non-compliant hardwoods as compliant when bushfire-resistant timber is required. This applies up to and including Bushfire Attack Level (BAL) 29 requirements.

The self-priming intumescent coating is exterior grade in its own right, and is the first of its kind. Its flexible and

Below: An uncoated decking structure on the left vs a substructure coated with the FIRESHELL F1E system on the right.

durable nature allows it to move with external timbers without cracking, providing class-leading fire resistant properties as well as a durable protective coating for the timber. The product comfortably passed the accelerated weathering component required under AS3959.

‘FIRESHELL F1E eliminates issues previously associated with external fire rated coatings. This is the next generation technology for increasing the fire resistance of external timbers,’ says EXFIRE director Cameron Watkin.

‘This is the next generation technology for increasing the fire resistance of external timbers’

EXFIRE is a fire-rated coating solutions company that utilises state-of-the-art technology from fire protection experts TPR2, focusing on customised solutions to meet the needs of the Australian building industry.

‘Understanding the requirements for building in a bushfire zone can sometimes be confusing,’ Cameron says. ‘We have an in-depth knowledge of the industry and are always available to answer any questions regarding our

A groundbreaking development

The development of a one-part water-based coating that is exterior-grade, easy to apply, and capable of reclassifying soft woods as bushfire-resistant timber, was not a simple one for Australian company EXFIRE. Its new product FIRESHELL F1E is the first coating of its kind to tick all these boxes, providing a much-needed technology for builders constructing homes in bushfire-prone areas.

As an intumescent coating, FIRESHELL F1E reacts when exposed to radiant heat, ember attack or direct flame. The coating expands to form an insulating layer between the heat source and the substrate. The expanding nature of the product seals off the combustible surface when exposed to fire, preventing ignition and flame spread to the coated area.

systems and achieving compliance for your specific situation.’

FIRESHELL F1E’s versatility and exterior capabilities have already seen it used to achieve compliance on a variety of projects across Australia. In addition to the AS3959-compliant applications to weatherboards, decking substructures, fences and other exposed timbers, FIRESHELL F1E has been used on a number of government projects including the Sydney Harbour Bridge, motorway developments, NSW light rail projects, and Department of Housing asset protection. It has also been used in utility pole applications to reduce risk of ignition and prevent flame spread on external combustible surfaces.

For more information call 1800 684 001 or visit www.exfire.com.au 